



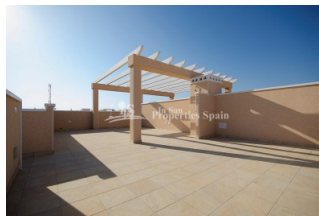
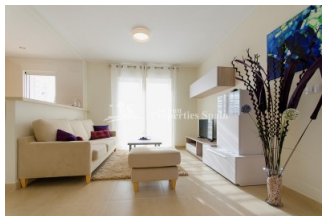
REF: # 5960

ORIHUELA COSTA (VILLAMARTIN AREA)



INFO

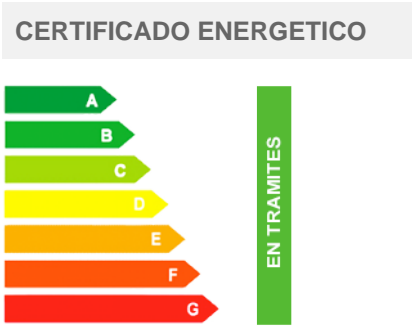
PRECIO:	319.900 €
TIPO:	Apartamento (Penthouse)
CIUDAD:	Orihuela Costa (Villamartin Area)
HABITACIONES:	3
Baños:	2
Construidos (m2):	102
Parcela (m2):	-
Terraza (m2):	109
Años:	
Planta:	-
MENSAJE	-



DESCRIPCION

Delivery in March 2019 of this popular Spa & Golf is located just 400 meters from VILLAMARTIN Golf Course. This is a 3 bedroom 102m2 Penthouse Apartment with 2 bathrooms, 30m2 Terrace and 79m2 solarium. The quality of finish from this build is second to none and they are well known for their workmanship and superb Mediterranean design mixed with all the modern touches. This location is ideal for Golf enthusiasts and those who want to enjoy the beach. Located only 2km from La Zenia Boulevard Shopping Center and 3km from la Zenia Beach, you will have the perfect combination of leisure and relaxation, an ideal area to enjoy the mild winters that our Mediterranean climate offers us. The Residential consists of 84 apartments with 2 or 3 bedrooms and 2 bathrooms with large terraces. 18 exclusive penthouses with 2 or 3 bedrooms and 2 bathrooms with private solarium and jacuzzi. All homes have a parking space in the basement. All set within approx. 5,000m2 of green areas with swimming pools (1 heated), Spa with Jacuzzi, sauna,

Gym and children's play area.



ESTILO <ul style="list-style-type: none">ContemporaneoMediterraneo	VISTAS <ul style="list-style-type: none">PanoramicoVistas al mar	DISTANCIA A : <div>Playa : 3 Km</div> <div>Aeropuerto: 50 Km</div> <div>Ciudad : 1 Km</div>	ORIENTACION <div>Sur East West</div>
AMUEBLADO <ul style="list-style-type: none">Sin amueblar	PARKING NO. DE COCHES <div>: 1</div>	AREAS <ul style="list-style-type: none">TrasteroSaunaBaño en dormitorioGymnasio	SUELO <ul style="list-style-type: none">AzulejosPiedra
COCINA <ul style="list-style-type: none">Cocina abiertaCocina equipadaGranito	JARDÍN Y TERRAZAS <ul style="list-style-type: none">Terraza cubiertaTerraza abiertaParque infantilPaisajistaCespedMuros de piedraJardín comunitario	EXTRA <ul style="list-style-type: none">Jacuzzi exteriorArmarios empotradosPuerta de seguridadDoble cristalTrasteroAscensor	





















"OUR EXPERIENCE IS YOUR GUARANTEE"