



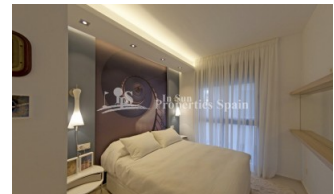
REF: # 5948

QUESADA-ROJALES (DONA PEPA)



INFO

PRECIO:	188.000 €
TIPO:	Apartamento
CIUDAD:	Quesada-Rojales (Dona Pepa)
HABITACIONES:	3
Baños:	2
Construidos (m2):	102
Parcela (m2):	-
Terraza (m2):	35
Años:	
Planta:	-
MENSAJE	-



DESCRIPCION

Gran Sol is a new KEY READY residential located in Doña Pepa, an elegant urbanisation with wide avenues, wonderful views to the Natural Park and the salt lakes with a wide range of leisure activities and all the necessary amenities. Available are these 3 bedrooms, 2 bathroom Ground Floor, Corner Apartments of 102m2 with 35m2 private garden with tiled area and artificial grass, storage room, access to four swimming pools, beautiful Green areas, Gym and a private gated parking inside the residential. Each block also has a lift that leads directly to the solarium. Its high-tech architecture with pure lines combines perfectly with its predominant colour (white) giving a sensation of harmony. Doña Pepa is a modern urbanisation belonging to Ciudad Quesada and has all the amenities which include supermarkets, bars, hotel and shops as well as a bank. Ciudad Quesada town centre is a ten minute walk from Doña Pepa. In Ciudad Quesada itself you will find international supermarkets, restaurants, banks, a medical centre as well as a water park. The property is ideally located if you are a golf enthusiast, with La Marquesqa

Golf Club just a five minute drive away. The nearest beaches are at Guardamar/Campomar and La Mata ten minutes drive away. Nearest Airports: San Javier (Murcia) - Approx 30 minute drive Alicante Airport - Approx 30 minute drive



ESTILO <ul style="list-style-type: none">• Moderno• Contemporaneo	VISTAS <ul style="list-style-type: none">• Panoramico	DISTANCIA A : <div>Playa : 7 Km</div> <div>Aeropuerto: 30 Km</div> <div>Ciudad : 1 Km</div>	ORIENTACION <div>Sur East West</div>
PARKING NO. DE COCHES <div>: 1</div>	AREAS <ul style="list-style-type: none">• Trastero• Gimnasio	SUELO <ul style="list-style-type: none">• Azulejos• Piedra	COCINA <ul style="list-style-type: none">• Cocina abierta• Cocina equipada
JARDÍN Y TERRAZAS <ul style="list-style-type: none">• Terraza cubierta• Terraza abierta• Paisajista• Muros de piedra• BBQ/grill• Jardín privado• Jardín comunitario	EXTRA <ul style="list-style-type: none">• Armarios empotrados• Puerta de seguridad• Doble cristal• Ascensor		













"OUR EXPERIENCE IS YOUR GUARANTEE"