



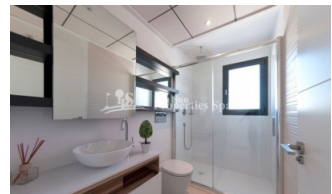
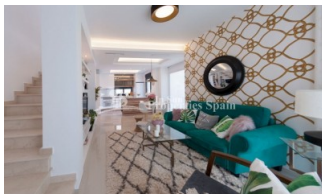
REF: # 5773

QUESADA-ROJALES (DONA PEPA)



INFO

PRECIO:	237.000 €
TIPO:	Adosado
CIUDAD:	Quesada-Rojales (Dona Pepa)
HABITACIONES:	2
Baños:	3
Construidos (m2):	96
Parcela (m2):	-
Terraza (m2):	34
Años:	
Planta:	-
MENSAJE	-



DESCRIPCION

KEY READY Allegra Residential in urbanisation DOÑA PEPA is a lovely complex where you can find different models of properties: apartments and townhouses. It's a gated residential, with beautiful green areas, communal swimming pools and parking, designed in Mediterranean style. These lovely 96m2 houses have a living-dining room, kitchen, 2 bedrooms, 3 bathrooms, minimum 4m2 terrace, minimum 90m2 private garden and minimum 30m2 roof terrace, utility room. Doña Pepa is an elegant urbanization with wide avenues, wonderful views to the Natural Park and the salt lakes with a wide range of leisure activities and all the necessary amenities without having to take a car. It is only 30 minutes away from international airports, 35 minutes from Alicante and 5 minutes from the most beautiful beaches of the Costa Blanca. It is an area with good annual temperatures and a great atmosphere. The area of Doña Pepa has a widely varied infrastructure offering a multitude of shops, supermarkets, restaurants, cafes, medical centers, pharmacies, golf courses, banks, a 4* Hotel with a Spa, a church, a social center, a cultural center, sports areas, an aquapark, a school, two natural parks, a

religious center and high quality shopping complexes.



ESTILO <ul style="list-style-type: none">• Moderno• Contemporaneo	VISTAS <ul style="list-style-type: none">• Panoramico	DISTANCIA A : <div>Playa : 9 Km</div> <div>Aeropuerto: 30 Km</div> <div>Ciudad : 1 Km</div>	ORIENTACION <div>Sur East West</div>
PARKING NO. DE COCHES <div>: 1</div>	SUELO <ul style="list-style-type: none">• Azulejos• Piedra	COCINA <ul style="list-style-type: none">• Cocina abierta• Cocina equipada	JARDÍN Y TERRAZAS <ul style="list-style-type: none">• Terraza cubierta• Terraza abierta• Jardín privado• Jardín comunitario
EXTRA <ul style="list-style-type: none">• Armarios empotrados• Puerta de seguridad			













Allegra
RESIDENTIAL

Model: Samara Corner
Property: 99,6m²
Garden: 90-120m²
Roof-Terrace: 30m²
2 Bedrooms
2 Bathrooms



Imagen Artística carece de valor contractual/Artistic Image free of contractual nature







"OUR EXPERIENCE IS YOUR GUARANTEE"