



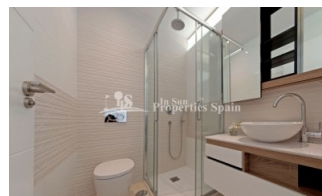
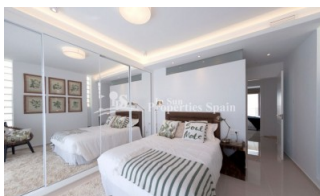
REF: # 5768

QUESADA-ROJALES (DONA PEPA)



#### INFO

PRECIO:	265.000 €
TIPO:	Adosado
CIUDAD:	Quesada-Rojales (Dona Pepa)
HABITACIONES:	3
Baños:	3
Construidos ( m2 ):	128
Parcela ( m2 ):	-
Terraza ( m2 ):	83
Años:	
Planta:	-
MENSAJE	-



#### DESCRIPCION

Delivery Feb 2019. Allegra Residential in urbanisation DOÑA PEPA is a lovely complex where you can find different model of properties; apartments and townhouses. It's a gated residential, with beautiful green areas, communal swimming pools and parking, designed in Mediterranean style. Ivory townhouses are spacious (up to 127,5m2) have 3 or 4 bedrooms, 3 bathrooms, 3 terraces, a storeroom, private minimum 110m2 garden and private minimum 55m2 roof terrace. Doña Pepa is an elegant urbanization with wide avenues, wonderful views to the Natural Park and the salt lakes with a wide range of leisure activities and all the necessary amenities without having to take a car. It is only 30 minutes away from international airports, 35 minutes from Alicante and 5 minutes from the most beautiful beaches of the Costa Blanca. It is an area with good annual temperatures and a great atmosphere. The area of Doña Pepa has a widely varied infrastructure offering a multitude of shops, supermarkets, restaurants, cafes, medical centers, pharmacies, golf courses, banks, a 4\* Hotel with a Spa, a church, a social center, a cultural center, sports areas, an aquapark, a school, two natural parks, a

religious center and high quality shopping complexes. Also available with 4 bedrooms, 3 bathrooms - price from €279,000.



<b>ESTILO</b> <ul style="list-style-type: none"><li>• Moderno</li><li>• Contemporaneo</li></ul>	<b>VISTAS</b> <ul style="list-style-type: none"><li>• Panoramico</li></ul>	<b>DISTANCIA A :</b> <div>Playa : 9 Km</div> <div>Aeropuerto: 30 Km</div> <div>Ciudad : 1 Km</div>	<b>PARKING NO. DE COCHES</b> <div>: 1</div>
<b>SUELO</b> <ul style="list-style-type: none"><li>• Azulejos</li><li>• Piedra</li></ul>	<b>COCINA</b> <ul style="list-style-type: none"><li>• Cocina abierta</li><li>• Cocina equipada</li><li>• Granito</li></ul>	<b>JARDÍN Y TERRAZAS</b> <ul style="list-style-type: none"><li>• Terraza cubierta</li><li>• Terraza abierta</li><li>• Jardín privado</li><li>• Jardín comunitario</li></ul>	<b>EXTRA</b> <ul style="list-style-type: none"><li>• Armarios empotrados</li><li>• Puerta de seguridad</li><li>• Doble cristal</li></ul>















Imagen Artística carece de valor contractual/Artistic Image free of contractual nature















**"OUR EXPERIENCE IS YOUR GUARANTEE"**