



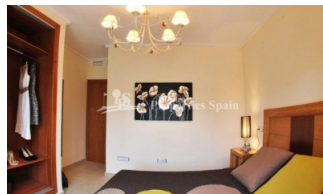
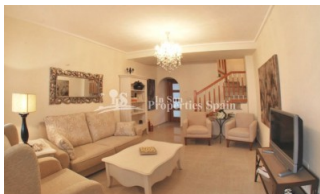
REF: # 4689

QUESADA-ROJALES (DONA PEPA)



INFO

PRECIO:	169.900 €
TIPO:	Adosado
CIUDAD:	Quesada-Rojales (Dona Pepa)
HABITACIONES:	2
Baños:	2
Construidos (m2):	82
Parcela (m2):	-
Terraza (m2):	-
Años:	-
Planta:	-
MENSAJE	-



DESCRIPCION

This is a lovely 2 bedroom 82m2 'Fortuna Model' Townhouse with 35m2 garden situated within a completely gated community located in DONA PEPA, close to CIUDAD QUESADA with a main entrance and exit. There are three main swimming pools and two additional pools for children. One of the main pools also has a Jacuzzi and hydro massage jet. There is an ample parking throughout the residential, however there is also a private parking space in the underground car park of the residential. The property is located close to the Playpark and Health centre within Doña Pepa, which is a modern urbanisation belonging to Ciudad Quesada and has all the amenities which include supermarkets, bars, hotel and shops as well as a bank. Ciudad Quesada town centre is a ten minute walk from Doña Pepa. In Ciudad Quesada itself you will find international supermarkets, restaurants, banks, a medical centre as well as a water park. The property is ideally located if you are a golf enthusiast, with La Marquesa Golf Club just a five minute drive away. The nearest beaches are at Guardamar/Campomar and La Mata ten minutes drive away.
*Furnishings at an additional cost Nearest Airports: San Javier (Murcia) -

Approx 30 minute drive Alicante Airport - Approx 30 minute drive



ESTILO	VISTAS	DISTANCIA A :	ORIENTACION
<ul style="list-style-type: none">Mediterraneo	<ul style="list-style-type: none">Panoramico	Playa : +10 Km Aeropuerto: 40 Km Ciudad : 1 Km	Sur East West
AMUEBLADO	PARKING NO. DE COCHES	SUELO	COCINA
<ul style="list-style-type: none">AmuebladoSin amueblar	Garage no. de coches : 1 : 1	<ul style="list-style-type: none">AzulejosPiedra	<ul style="list-style-type: none">Cocina abiertaCocina equipada
JARDÍN Y TERRAZAS	EXTRA		
<ul style="list-style-type: none">Terraza cubiertaTerraza abiertaParque infantilPaisajistaJardín privadoJardín comunitario	<ul style="list-style-type: none">Armarios empotradosPuerta de seguridadDoble cristal		





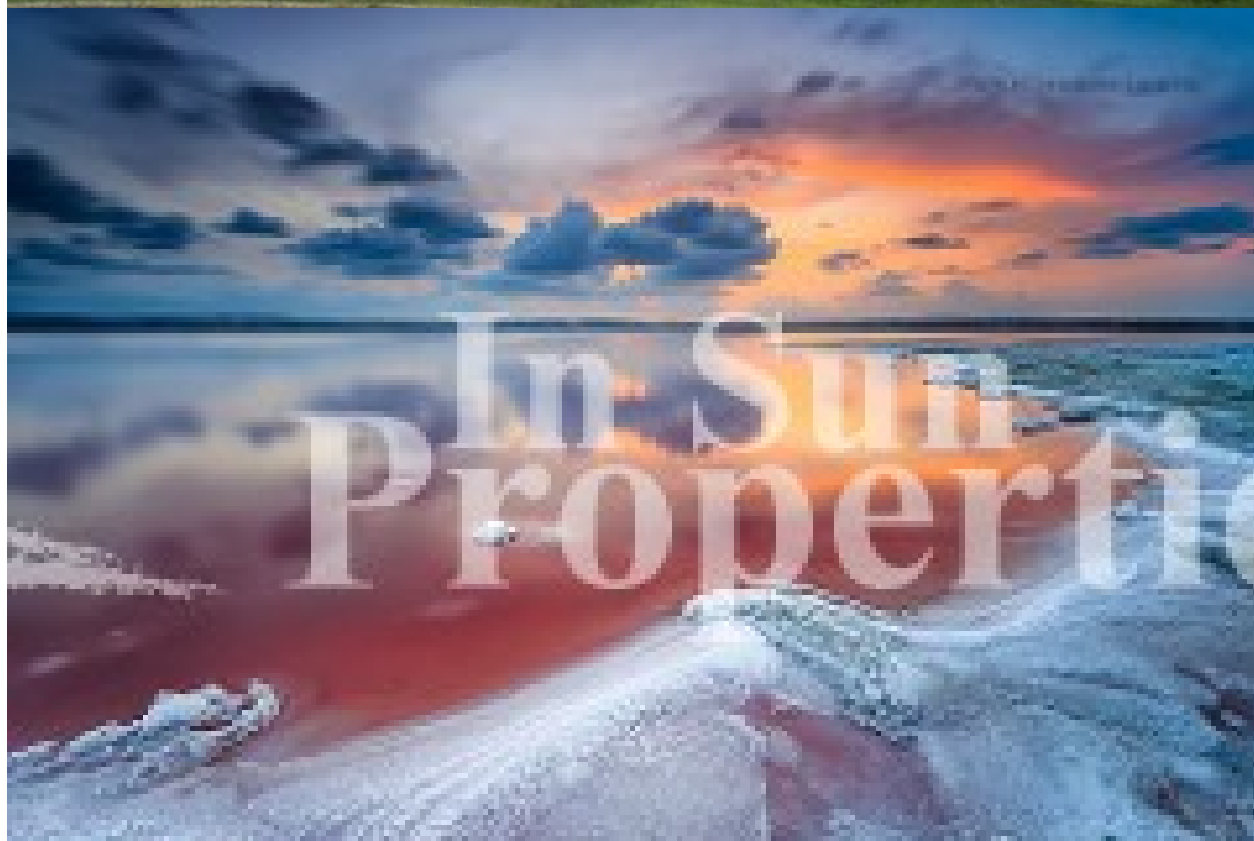












"OUR EXPERIENCE IS YOUR GUARANTEE"