



REF: # 4325

ORIHUELA COSTA (VILLAMARTIN GOLF)



INFO

PRECIO: 210.000 €

TIPO: Adosado

CIUDAD: Orihuela
Costa
(Villamartin
Golf)

HABITACIONES: 3

Baños: 3

Construidos (m2): 131

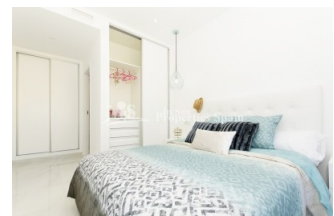
Parcela (m2): 97

Terraza (m2): 39

Años:

Planta: -

MENSAJE -



DESCRIPCION

Delivery from Sept 2019 at this is a superb NEW project which consists of 27 TOWNHOUSES with 2/3 bedrooms, 3 bathroom within a gated community in the VILLAMARTIN GOLF AREA, with solarium, storage room on the patio, access to the HEATED community POOL and superb views to Villamartin Golf! There is the option to have just 2 bedrooms, 3 bathrooms or 3 bedrooms, 3 bathrooms AND there is the option of a PRIVATE 3.5 X 2M SWIMMING POOL (at an additional cost). Villamartín offers a wide range of services. For over 40 years it has been a golf tourist attraction and as it is expected from a residential complex of this standard all services are fully developed. There are many commercial centers including the well know Villamartin Plaza and famous Zenia Boulevard along with many restaurants, fashion shops, supermarkets, banks, pharmacies etc. Villamartin was built round one of the most prestigious golf courses on the Costa Blanca-Villamartín Golf Club- it is home to a Cosmopolitan and International community. Just a short

distance away you can find 3 other golf courses such as Las Ramblas, Campoamor and La Finca. However, it is not only a golfers paradise, you can also find a large range of activities and entertainment for all the family; water parks in Torrevieja and Ciudad Quesada, 3km from some of the best beaches in the region, open weekly markets, cinemas etc. Villamartín is approximately 50 minutes from Alicante Airport and 30 minutes from Murcia airport. *Price for special Promo +€14,900*



ESTILO <ul style="list-style-type: none">• Moderno• Contemporaneo	VISTAS <ul style="list-style-type: none">• Panoramico	AIRE ACONDICIONADO <ul style="list-style-type: none">• Central	DISTANCIA A : <div>Playa : 3 Km</div> <div>Aeropuerto: 50 Km</div> <div>Ciudad : 1 Km</div>
ORIENTACION <div>Sur oeste</div>	AMUEBLADO <ul style="list-style-type: none">• Sin amueblar	PARKING NO. DE COCHES <div>: 1</div>	AREAS <ul style="list-style-type: none">• Trastero
SUELO <ul style="list-style-type: none">• Azulejos• Piedra	COCINA <ul style="list-style-type: none">• Cocina abierta• Cocina equipada• Granito	JARDÍN Y TERRAZAS <ul style="list-style-type: none">• Terraza cubierta• Terraza abierta• Luces exteriores• Riego automatico• Vallado• Muros de piedra• Jardín privado• Jardín comunitario	EXTRA <ul style="list-style-type: none">• Armarios empotrados• Puerta de seguridad• Doble cristal• Trastero















Image not found

https://www.cmsinmo.com/imagenes/uploads/inmu/5/4325/Altos_de_Villamartín_PLAN.jpeg







"OUR EXPERIENCE IS YOUR GUARANTEE"