



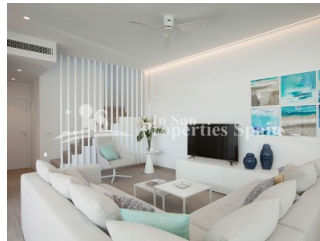
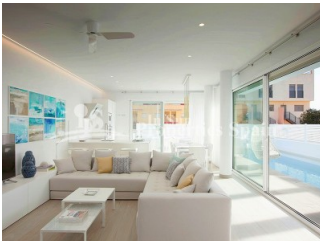
REF: # 4297

ORIHUELA COSTA (GUARDAMAR)



#### INFO

PRECIO:	410.700 €
TIPO:	Villa
CIUDAD:	Orihuela Costa (Guardamar)
HABITACIONES:	3
Baños:	3
Construidos ( m2 ):	145
Parcela ( m2 ):	260
Terraza ( m2 ):	60.78
Años:	
Planta:	-
MENSAJE	-



#### DESCRIPCION

Elegant 145m2 Villa Nimbus boasting 3 bedroom, 3 bathrooms on a generous 260m2 plot, placed in a gated residential complex composed of 20 unique design villas. Included is a stylish swimming pool with chill out underwater bench, underwater led lights and a solar-powered pool shower. Enjoy privacy on your fully fenced plot with exterior storage room and off road parking. Top of the range kitchen with quartz worktop, including dishwasher, oven, ceramic hob, and fridge-freezer. Sit back and relax on your spacious south facing terraces of up to 145m2 including palm trees with their own automatic irrigation system. The development is just 10 minutes drive to golf La Marquesa and only (800m) 10 minutes walking distance to the beach and all the amenities of Guardamar. Guardamar del Segura is a typical Spanish town which not only has some of the best beaches in Spain, it also has an excellent street market every Wednesday morning and some brilliant shops, bars and restaurants. It is about 30 minutes drive south from Alicante airport and about 40 minutes drive north from San Javier airport (also known as

Murcia airport). The nearest neighboring village is La Mata, a typical laid-back Spanish village by the beach. Nov 2018 delivery.



<b>ESTILO</b> <ul style="list-style-type: none"><li>• Moderno</li><li>• Contemporaneo</li></ul>	<b>VISTAS</b> <ul style="list-style-type: none"><li>• Panoramico</li><li>• Vistas al mar</li></ul>	<b>AIRE ACONDICIONADO</b> <ul style="list-style-type: none"><li>• Central</li></ul>	<b>DISTANCIA A :</b> <div>Playa : 1 Km</div> <div>Aeropuerto: 30 Km</div> <div>Ciudad : 1 Km</div>
<b>ORIENTACION</b> <div>Sur</div>	<b>AMUEBLADO</b> <ul style="list-style-type: none"><li>• Amueblado</li></ul>	<b>PARKING NO. DE COCHES</b> <div>: 1</div>	<b>AREAS</b> <ul style="list-style-type: none"><li>• Trastero</li><li>• Baño en dormitorio</li></ul>
<b>SUELO</b> <ul style="list-style-type: none"><li>• Azulejos</li><li>• Piedra</li></ul>	<b>COCINA</b> <ul style="list-style-type: none"><li>• Cocina abierta</li><li>• Cocina equipada</li><li>• Granito</li></ul>	<b>JARDÍN Y TERRAZAS</b> <ul style="list-style-type: none"><li>• Terraza cubierta</li><li>• Terraza abierta</li><li>• Riego automatico</li><li>• Vallado</li><li>• Muros de piedra</li><li>• Jardín privado</li></ul>	<b>EXTRA</b> <ul style="list-style-type: none"><li>• Puerta de seguridad</li><li>• Doble cristal</li><li>• Trastero</li></ul>





















**"OUR EXPERIENCE IS YOUR GUARANTEE"**