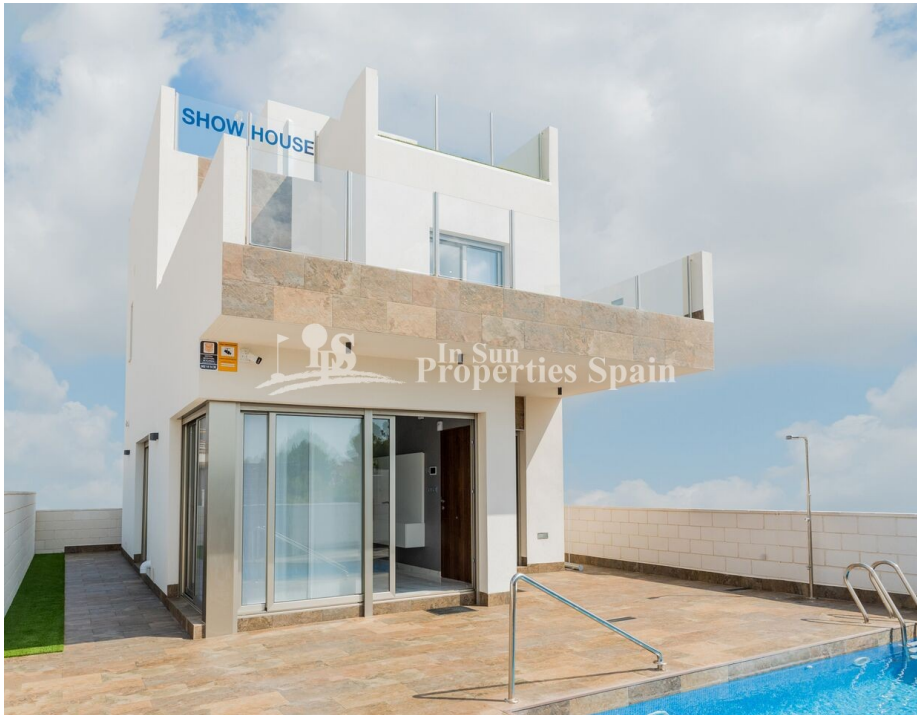




REF: # 2960

ORIHUELA COSTA (VILLAMARTIN-PAU26)



#### INFO

PRECIO:	321.000 €
TIPO:	Villa
CIUDAD:	Orihuela Costa (Villamartin- Pau26)
HABITACIONES:	3
Baños:	3
Construidos ( m2 ):	107
Parcela ( m2 ):	200
Terraza ( m2 ):	56
Años:	-
Planta:	-
MENSAJE	-



#### DESCRIPCION

KEY READY! Located in VILLAMARTIN, PAU-26 are these stunning key ready 107 m2 detached Villas "Duplex" model set over 3 floors. The ground floor boasts entrance porch, open plan living/dining area with modern fitted kitchen, utility area/galleria, one double bedroom and a bathroom. To the first floor there are two further bedrooms both with terraces and 2 bathrooms. There is access to the 56m2 roof solarium offering stunning views. Off road parking and private garden with space for private swimming pool. Pink Paradise Residential is located within a wonderful natural environment, with unbeatable views to the Salinas of Torrevieja and the natural park and is very close to the golf course of Villamartin. Within five minutes drive you will reach the beautiful beach of La Zenia and en-route you would have passed the newly created La Zenia Boulevard, possibly the best shopping centre in the province of Alicante. Also nearby are four championship 18-hole golf courses, with the closest being that of Villamartin, the jewel in the crown for this area.

#### CERTIFICADO ENERGETICO



<b>ESTILO</b> <ul style="list-style-type: none"><li>Moderno</li></ul>	<b>VISTAS</b> <ul style="list-style-type: none"><li>Panoramico</li></ul>	<b>AIRE ACONDICIONADO</b> <ul style="list-style-type: none"><li>Central</li></ul>	<b>DISTANCIA A :</b> <div>Playa : 4 Km</div> <div>Aeropuerto: 50 Km</div> <div>Ciudad : 1 Km</div>
<b>ORIENTACION</b> <div>Sur oeste</div>	<b>AMUEBLADO</b> <ul style="list-style-type: none"><li>Sin amueblar</li></ul>	<b>PARKING NO. DE COCHES</b> <div>: 2</div>	<b>SUELO</b> <ul style="list-style-type: none"><li>Azulejos</li><li>Piedra</li></ul>
<b>COCINA</b> <ul style="list-style-type: none"><li>Cocina abierta</li><li>Granito</li></ul>	<b>JARDÍN Y TERRAZAS</b> <ul style="list-style-type: none"><li>Terraza abierta</li><li>Luces exteriores</li><li>Riego automatico</li><li>Muros de piedra</li><li>Jardín privado</li></ul>	<b>EXTRA</b> <ul style="list-style-type: none"><li>Armarios empotrados</li><li>Doble cristal</li><li>Trastero</li></ul>	









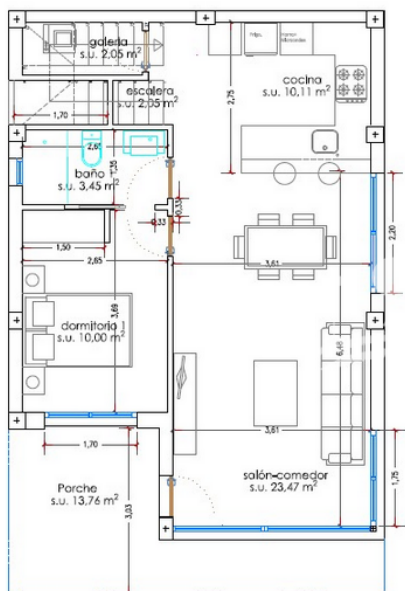


 In Sun  
Properties Spain

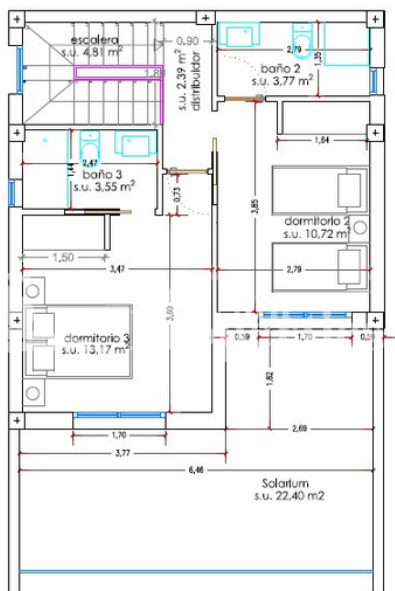


 In Sun  
Properties Spain

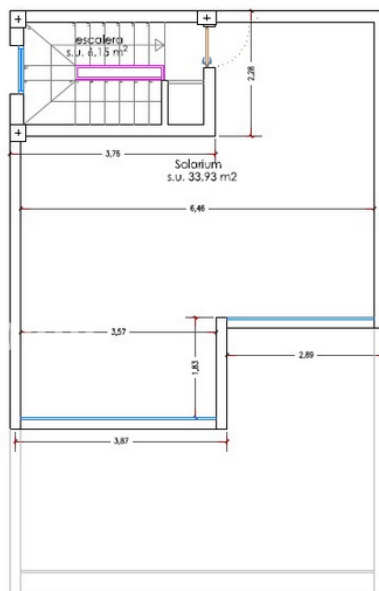




planta baja

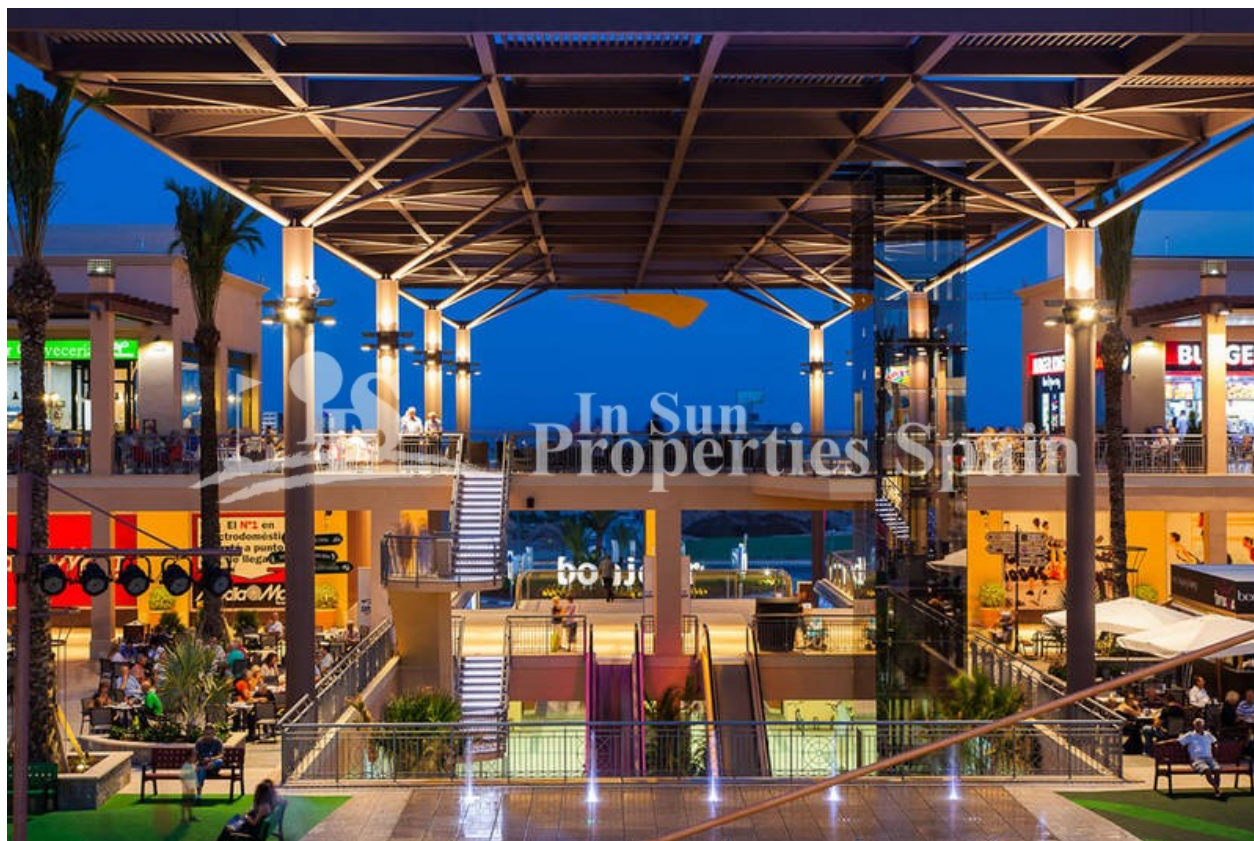


planta primera



planta solarium





**"OUR EXPERIENCE IS YOUR GUARANTEE"**