



REF: # 12964

ORIHUELA COSTA (LAS COLINAS)



INFO

PRECIO: 1.165.000 €

TIPO: Villa

CIUDAD: Orihuela
Costa (Las
Colinas)

HABITACIONES: 3

Baños: 3

Construidos (m2): 150

Parcela (m2): 699

Terraza (m2): 138

Años:

Planta: -

MENSAJE -



DESCRIPCION

NEW BUILD 150M2 FULLY FURNISHED *KEY READY* LUXURY VILLA built on a plot of 699m2 and located in the prestigious area of Las Colinas Golf, Orihuela Costa. The property consists of 3 bedrooms (with fitted wardrobes), 3 bathrooms, an open plan fully equipped kitchen, spacious dining / lounge area and a 138m2 terrace. Complete with furnishings that have been thoughtfully selected by interior designers, making the most of every inch of space to create a stylish and functional living experience. It is perfect for clients looking to move in to a new home in Spain with out delay! This quiet location offers lots of privacy and is surrounded by the local Mediterranean forest and green area. In the heart of the Costa Blanca South, this leafy valley of 330 hectares between hills is very close to the sea, only 15mins drive, and has a magnificent championship golf course that crosses it. Las Colinas Golf & Country Club provides a wide variety of amenities for its property owners; tennis, padel-tennis, fitness, massage, golf, restaurants, mini-market with fresh baked bread and much more. You will enjoy 200,000 square

meters of beautiful Mediterranean landscapes, take scenic walks through the lush indigenous, native flora and the extensive fields of orange and lemon groves. Las Colinas golf is located 40 minutes from Alicante airport and 1 hour Murcia - Corvera airport.



ESTILO <ul style="list-style-type: none">• Moderno• Contemporaneo	VISTAS <ul style="list-style-type: none">• Panoramico• Vistas a la montaña	AIRE ACONDICIONADO <ul style="list-style-type: none">• Central	DISTANCIA A : <div>Playa : 8 Km</div> <div>Aeropuerto: 60 Km</div> <div>Ciudad : 5 Km</div>
ORIENTACION <div>Sur oeste</div>	PARKING NO. DE COCHES <div>: 2</div>	AREAS <ul style="list-style-type: none">• Trastero• Baño en dormitorio	SUELO <ul style="list-style-type: none">• Azulejos
COCINA <ul style="list-style-type: none">• Cocina abierta• Cocina equipada• Granito	JARDÍN Y TERRAZAS <ul style="list-style-type: none">• Terraza cubierta• Terraza abierta• Luces exteriores• Riego automatico• Palmeras• Paisajista• Vallado• Muros de piedra• Puerta electrica• Cocina exterior• BBQ/grill• Jardín privado	CALEFACION <ul style="list-style-type: none">• Calefacion electrica	EXTRA <ul style="list-style-type: none">• Armarios empotrados• Alarma• Puerta de seguridad• Doble cristal• Guardia de seguridad









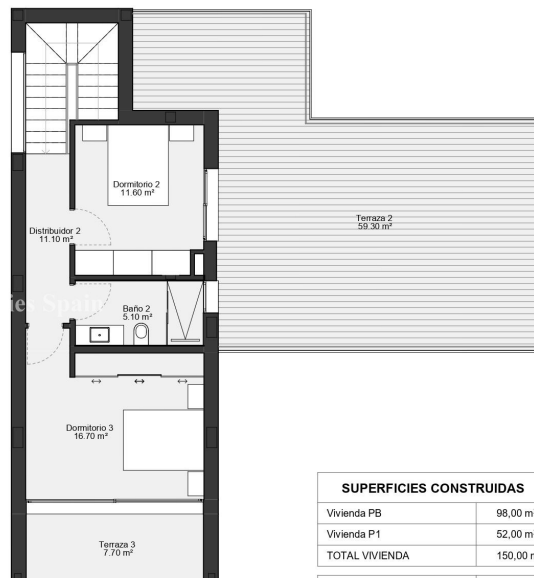
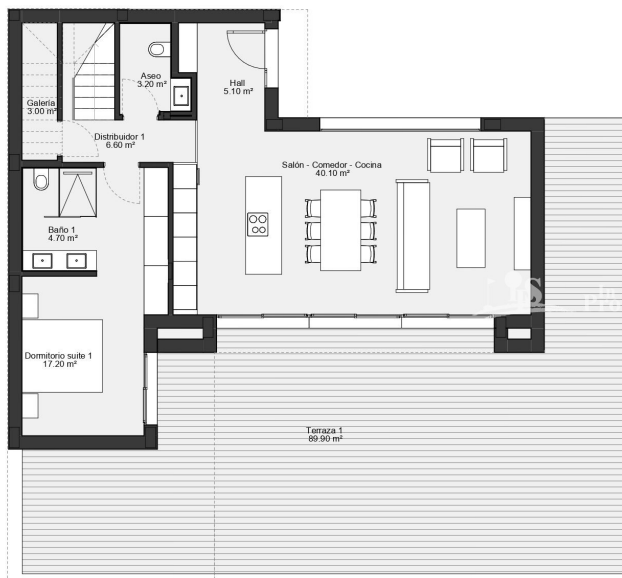












SUPERFICIES CONSTRUIDAS	
Vivienda PB	98,00 m²
Vivienda P1	52,00 m²
TOTAL VIVIENDA	150,00 m²
Terrazas PB y P1	188,00 m²



"OUR EXPERIENCE IS YOUR GUARANTEE"