



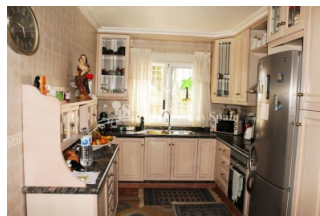
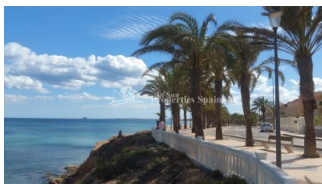
REF: # 6940

ORIHUELA COSTA (PINAR DE CAMPOVERDE)



INFO

PRECIO:	265.000 €
TIPO:	Villa
CIUDAD:	Orihuela Costa (Pinar de Campoverde)
HABITACIONES:	3
Baños:	3
Construidos (m2):	140
Parcela (m2):	819
Terraza (m2):	34
Años:	1997
Planta:	-
MENSAJE	-



DESCRIPCION

A Detached Villa on a generous 819m2 plot by the rambla in PINAR DE CAMPOVERDE-PILAR DE LA HORADADA. The 140m2, south and west facing Villa has a private mature garden with many areas to relax surrounded by nature. You could create a lovely fruit/vegetable area, make a bbq zone and relax around the 8x4 swimming pool. The main accommodation boasts two glazed terraces of 24m2 and 10m2, lounge, dining area and fitted kitchen, plus two bedrooms and 2 bathrooms. To the lower level you have a garage, one bedroom and a bathroom plus there is a small home gym, pool table and summer shed. The Villa is equipped with oil central heating, Alarm system, AC and satellite TV. The Villa boasts views to the pool and the sea along with the rambla. Pinar de Campoverde is a village set on a wooded hillside, 8km from the coast with views to the Mediterranean sea. There are many northern European residents living here. To the south west of the village is the famous Rio Seca Natural Park where you can walk along the (usually dry!) bed of the

river. The centre of Campoverde has several bars, restaurants, a supermarket and a bank. There is also a small street market on Sunday mornings. There is a new 20,000m2 sports area with several tennis courts, basketball, football and a large public swimming pool.?? 15 minutes drive from Pinar de Campoverde takes you to several beaches; with 4kms of sandy beaches stretching from El Mojon to Mil Palmeras, including a small, pretty cove at Torre de la Horadada where there is also a marina.



ESTILO <ul style="list-style-type: none"> Mediterraneo 	VISTAS <ul style="list-style-type: none"> Panoramico Vistas al mar 	AIRE ACONDICIONADO <ul style="list-style-type: none"> Central 	DISTANCIA A : <div>Playa : 8 Km</div> <div>Aeropuerto: 50 Km</div> <div>Ciudad : 1 Km</div>
ORIENTACION <div>Sur oeste</div>	AMUEBLADO <ul style="list-style-type: none"> Amueblado 	PARKING NO. DE COCHES <div>Garage no. de coches : 1</div> <div>: 2</div>	TASAS <div>I.B.I : 790 €</div>
AREAS <ul style="list-style-type: none"> Baño en dormitorio 	SUELO <ul style="list-style-type: none"> Azulejos Piedra 	COCINA <ul style="list-style-type: none"> Cocina abierta Cocina equipada 	JARDÍN Y TERRAZAS <ul style="list-style-type: none"> Terraza cubierta Terraza abierta Luces exteriores Arboles frutales Muros de piedra Jardín privado
EXTRA <ul style="list-style-type: none"> Alarma Trastero 	CERTIFICADO ENERGETICO <div>  </div>		

"OUR EXPERIENCE IS YOUR GUARANTEE"