



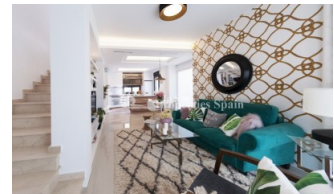
REF: # 4506

QUESADA-ROJALES (DONA PEPA)



INFO

PRECIO:	318.581 €
TIPO:	Villa (Semi detached)
CIUDAD:	Quesada-Rojales (Dona Pepa)
HABITACIONES:	3
Baños:	3
Construidos ( m2 ):	151
Parcela ( m2 ):	-
Terraza ( m2 ):	130
Años:	
Planta:	-
MENSAJE	299.000 €




DESCRIPCION

Residential Riva in DONA PEPA, CIUDAD QUESDAD offers Samara Corner Semi- Villas of 150'70m2 with 3 bedrooms, 3 bathrooms, 30m2 solarium and 100m2 garden with 54m2 basement. The development is Key Ready. The development boasts a Communal swimming pool, private parking, gated community and each property has 2 terraces, and is facing the swimming pool! The location of this residential is unbeatable; it has incredible views to the Salt Lakes. Is close to all type of services like commercial areas, hospitals, airports, leisure areas and more! Doña Pepa is an elegant urbanization with wide avenues, wonderful views to the Natural Park and the salt lakes with a wide range of leisure activities and all the necessary amenities without having to take a car. It is only 30 minutes away from international airports, 35 minutes from Alicante and 5 minutes from the most beautiful beaches of the Costa Blanca. It is an area with good annual temperatures and a great

atmosphere. The area of Doña Pepa has a widely varied infrastructure offering a multitude of shops, supermarkets, restaurants, cafes, medical centres, pharmacies, golf courses, banks, a 4\* Hotel with a Spa, a church, a social centre, a cultural centre, sports areas, an aqua park, a school, two natural parks, a religious centre and high quality shopping complexes.



<b>ESTILO</b> <ul style="list-style-type: none"> <li>Moderno</li> <li>Contemporaneo</li> </ul>	<b>VISTAS</b> <ul style="list-style-type: none"> <li>Panoramico</li> </ul>	<b>DISTANCIA A :</b> <div>Playa : 3 Km</div> <div>Aeropuerto: 30 Km</div> <div>Ciudad : 1 Km</div>	<b>ORIENTACION</b> <div>Sur East West</div>
<b>AMUEBLADO</b> <ul style="list-style-type: none"> <li>Sin amueblar</li> </ul>	<b>PARKING NO. DE COCHES</b> <div>: 1</div>	<b>SUELO</b> <ul style="list-style-type: none"> <li>Azulejos</li> <li>Piedra</li> </ul>	<b>JARDÍN Y TERRAZAS</b> <ul style="list-style-type: none"> <li>Terraza abierta</li> <li>Paisajista</li> </ul>
<b>EXTRA</b> <ul style="list-style-type: none"> <li>Armarios empotrados</li> <li>Puerta de seguridad</li> <li>Doble cristal</li> </ul>	<b>CERTIFICADO ENERGETICO</b> <div>  </div>		

"OUR EXPERIENCE IS YOUR GUARANTEE"