



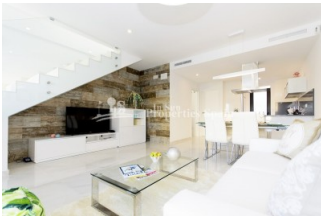
REF: # 4325

ORIHUELA COSTA (VILLAMARTIN GOLF )



#### INFO

PRECIO:	210.000 €
TIPO:	Adosado
CIUDAD:	Orihuela Costa (Villamartin Golf )
HABITACIONES:	3
Baños:	3
Construidos ( m2 ):	131
Parcela ( m2 ):	97
Terraza ( m2 ):	39
Años:	
Planta:	-
MENSAJE	-



#### DESCRIPCION

Delivery from Sept 2019 at this is a superb NEW project which consists of 27 TOWNHOUSES with 2/3 bedrooms, 3 bathroom within a gated community in the VILLAMARTIN GOLF AREA, with solarium, storage room on the patio, access to the HEATED community POOL and superb views to Villamartin Golf! There is the option to have just 2 bedrooms, 3 bathrooms or 3 bedrooms, 3 bathrooms AND there is the option of a PRIVATE 3.5 X 2M SWIMMING POOL (at an additional cost). Villamartin offers a wide range of services. For over 40 years it has been a golf tourist attraction and as it is expected from a residential complex of this standard all services are fully developed. There are many commercial centers including the well know Villamartin Plaza and famous Zenia Boulevard along with many restaurants, fashion shops, supermarkets, banks, pharmacies etc. Villamartin was built round one of the most prestigious golf courses on the Costa Blanca-Villamartin Golf Club- it is

home to a Cosmopolitan and International community. Just a short distance away you can find 3 other golf courses such as Las Ramblas, Campoamor and La Finca. However, it is not only a golfers paradise, you can also find a large range of activities and entertainment for all the family; water parks in Torrevieja and Ciudad Quesada, 3km from some of the best beaches in the region, open weekly markets, cinemas etc. Villamartín is approximately 50 minutes from Alicante Airport and 30 minutes from Murcia airport. \*Price for special Promo +€14,900\*



<b>ESTILO</b> <ul style="list-style-type: none"> <li>Moderno</li> <li>Contemporaneo</li> </ul>	<b>VISTAS</b> <ul style="list-style-type: none"> <li>Panoramico</li> </ul>	<b>AIRE ACONDICIONADO</b> <ul style="list-style-type: none"> <li>Central</li> </ul>	<b>DISTANCIA A :</b> <div> Playa : 3 Km </div> <div> Aeropuerto: 50 Km </div> <div> Ciudad : 1 Km </div>
<b>ORIENTACION</b> <div> Sur oeste </div>	<b>AMUEBLADO</b> <ul style="list-style-type: none"> <li>Sin amueblar</li> </ul>	<b>PARKING NO. DE COCHES</b> <div> : 1 </div>	<b>AREAS</b> <ul style="list-style-type: none"> <li>Trastero</li> </ul>
<b>SUELO</b> <ul style="list-style-type: none"> <li>Azulejos</li> <li>Piedra</li> </ul>	<b>COCINA</b> <ul style="list-style-type: none"> <li>Cocina abierta</li> <li>Cocina equipada</li> <li>Granito</li> </ul>	<b>JARDÍN Y TERRAZAS</b> <ul style="list-style-type: none"> <li>Terraza cubierta</li> <li>Terraza abierta</li> <li>Luces exteriores</li> <li>Riego automatico</li> <li>Vallado</li> <li>Muros de piedra</li> <li>Jardín privado</li> <li>Jardín comunitario</li> </ul>	<b>CERTIFICADO ENERGETICO</b> <ul style="list-style-type: none"> <li>Armarios empotrados</li> <li>Barra de seguridad</li> <li>Doble cristal</li> <li>Trastero</li> </ul> <div> <div> A </div> <div> B </div> <div> C </div> <div> D </div> <div> E </div> <div> F </div> <div> G </div> </div> <div> EN TRAMITES </div>

"OUR EXPERIENCE IS YOUR GUARANTEE"